

Courses and Levels

AP – Advanced Placement	HON – Honors
<i>Highest level of a course will be either AP or Honors*</i>	
ACC – Accelerated	CP – College Preparatory
<i>Courses designated with above levels are included in the GPA.</i>	
NL – Not Leveled	SS – Summer School
	CS – School Based Community Service

Curriculum (as available to YOG 2018)

NRHS offers a comprehensive curriculum to all students. The complete program is available on the high school website at nrhs.nrsd.net.

The most rigorous courses offered for the Class of 2018 were:

English: Hon English 9, 10, Hon American Lit., Hon English 12*, AP English Literature & Composition.

Science: Hon Environmental Sci., Hon Physics w/Engineering Apps, Hon Biology*, AP Biology, AP Chemistry, AP Physics C, AP Physics 1.

Math: Hon Geometry, Hon Algebra 2/Trig., Hon Pre-Calculus/Intro to Calc, AP Calculus AB, AP Calculus BC, AP Statistics. AP Comp Sci

Social Studies: Hon World History, Hon Civil War, Hon Facing History, Hon Pre-AP US History 1, Hon Understanding the 60's; Hon Sociology, AP US History, AP Psychology, AP US Gov't & Politics.

Language: Hon French 1,2,3,4, AP French Language; Hon Spanish 1,2,3,4, AP Spanish Language; Hon Latin 1,2,3, AP Latin Vergil; Hon German 1,2,3, AP German Language.

* Notes:

- Courses offered as AP are not available as Honors with the exception of Hon Biology & Hon English 12 which are comparable in rigor to AP but follow local curriculum.
- If not listed above, Accelerated is the most rigorous level available.

Graduation Requirements

In addition to passing MCAS scores, 90 credits are required to graduate. Full year courses grant 4 credits; semester courses, 2 credits. Students must take the following:

English	16 credits
Social Studies	12 credits (US History req'd)
Science	12 credits
Mathematics	12 credits
World Language	8 credits
PE/Wellness/Health	4 credits
Fine & Performing Arts	4 credits
Computer Technology	4 credits

Special Programs

- Nashoba is one of two high schools in Mass offering a state and nationally certified EMT program.
- Each year, the Harvard-Smithsonian Center for Astrophysics in Cambridge, MA offers an internship to one Nashoba junior.
- 6 Nashoba seniors are participating in dual enrollment programs at local community and state colleges this year.

Marking System

GPA Calculations

The cumulative un-weighted GPA posted on the transcript is based upon a 4.0 scale and includes all courses receiving a letter grade.

Weighted GPA

The following chart describes application of quality points.

Grade	Numeric Equivalent	AP/HON	ACC	CP
A+	97 & above	5.00	4.50	4.00
A	93-96	4.75	4.25	3.75
A-	90-92	4.50	4.00	3.50
B+	87-89	4.25	3.75	3.25
B	83-86	4.00	3.50	3.00
B-	80-82	3.75	3.25	2.75
C+	77-79	3.50	3.00	2.50
C	73-76	3.25	2.75	2.25
C-	70-72	3.00	2.50	2.00
D+	67-69	2.75	2.25	1.75
D	63-66	2.50	2.00	1.50
D-	60-62	2.25	1.75	1.25
F	Below 60	0.00	0.00	0.00
P	Pass			

The weighted GPA is calculated using the allotted quality points multiplied by the number of credits, and the above product is then divided by the total number of credits.

$$\frac{\text{Quality points} \times \# \text{ Credits}}{\text{Total credits}} = \text{Weighted GPA}$$

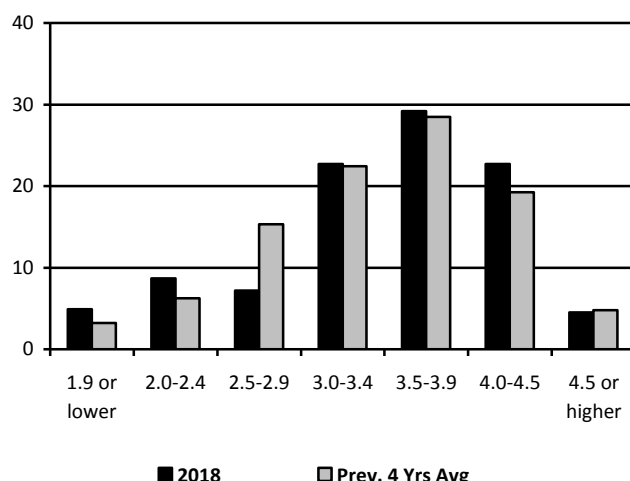
Nashoba discontinued ranking students as of 2014-2015.

Class of 2018:

The highest weighted GPA is 4.84 on a 5.0 scale.

Class of 2018 (264 GPA members) Weighted GPA Distribution – 6 Semesters

Percent of class by GPA range



Nashoba Regional High School

The Nashoba Regional School District serves the towns of Bolton, Lancaster and Stow, residential & agricultural suburbs about 25 miles west of Boston, MA. Each of these three towns has a mix of professional, managerial, skilled and unskilled worker residents.

Nashoba Regional High School is a four year comprehensive public high school (9-12) with NEASC accreditation. 10% of our students receive Free or Reduced Lunch.

10/1/17 Enrollment: Grade 9241 Grade 11.....247
Grade 10.....221 Grade 12.....267

Post Secondary Plans

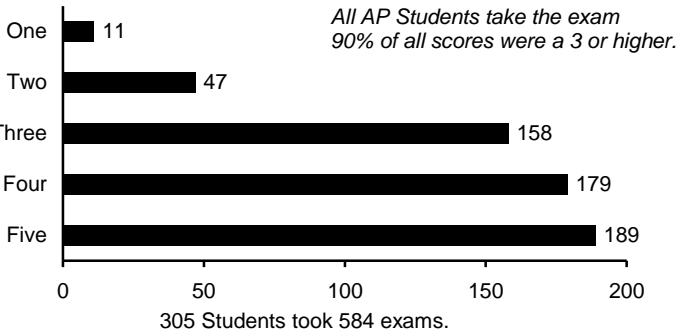
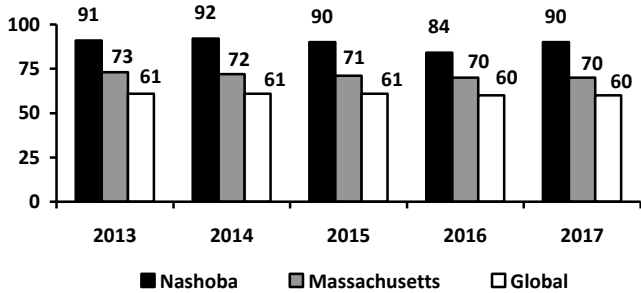
The graduates of the Class of 2017 applied to over 260 different postsecondary institutions with a 71% acceptance rate.

2017 Graduates Attending:

Four Year College 87%
Two Year & Career College 12%
Military/Gap/Work/Other 10%

Advanced Placement Results – May 2017

% of Total AP Students with Scores 3+



All AP Students take the exam
90% of all scores were a 3 or higher.

Biology	Chemistry	Physics 1	Physics C Mech
Calculus AB	Calculus BC	Statistics	Psychology
English Lit	US History	US Gov & Pol	Music Theory
Latin	French Lang.	German Lang.	Spanish Lang.
Comp Sci Prin	Studio Art, 2D & 3D	Studio Art: Drawing	

67% of the 2017 graduating class took at least 1 AP class and earned at least a 3 on the exam.

AP Awards

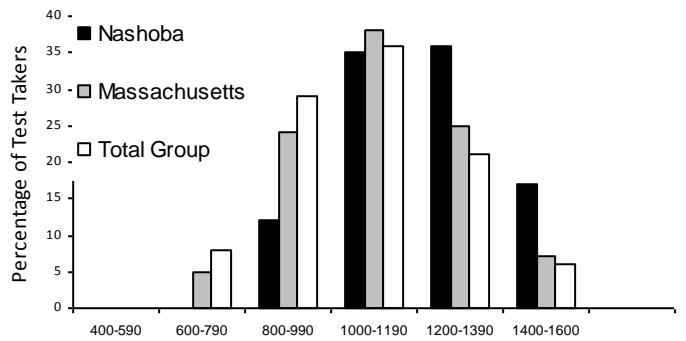
	Test Date: 2014	2015	2016	2017
AP Scholars	41	31	30	38
AP Scholars with Honor	22	17	18	23
AP Scholars with Distinction	37	38	35	39
National AP Scholars	5	4	3	11

National Merit

Class of:	2014	2015	2016	2017
Commendations	10	17	11	15
Semi-finalist	3	2	1	8
Finalists	3	2	1	8

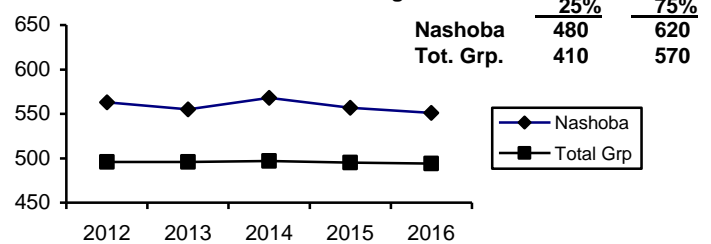
Standardized Test Scores

SAT Class of 2017 Total Score Distribution

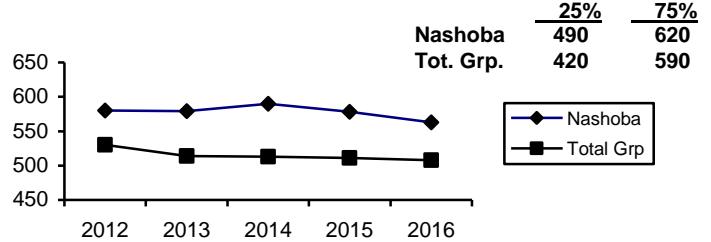


217 members of the Class of 2017 took the SAT I

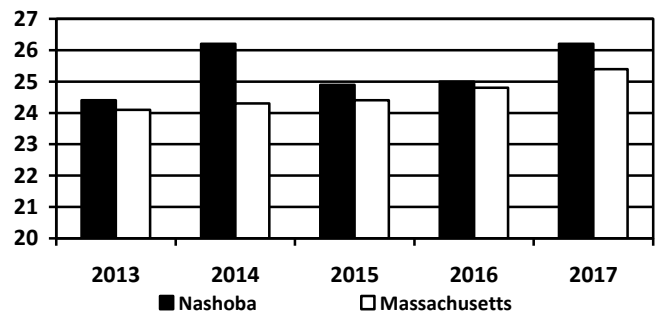
SAT I Historic Mean - Critical Reading



SAT I Historic Mean - Mathematics



ACT Historical Means



College Acceptances for the Class of 2017

American International College	Columbia University	Hofstra University	Miami University, Oxford	Rutgers University-New Brunswick	U of Scranton	U of Rhode Island
American University	Conn College	Houghton College	Michigan State	Sacred Heart	U of Tampa	U of Richmond
Amherst College	Cornell University	Husson University	Middlebury College	Saint Anselm	U of Texas, Austin	U of Rochester
Anna Maria College	Curry College	Indiana University at Bloomington	Mount Holyoke	Saint Michael's	Towson University	U of South Florida, Tampa
Arizona State University	Dean College	Kean University	Mount Ida College	Santa Clara	Trinity College	U of St Andrews
Assumption College	DePaul University	Keene State	New England College	SCAD	Tufts University	U of Sussex
Auburn University	Drew University	Kent State	New York Institute of Technology	School of the Art Institute of Chicago	Tulane University	U of Toronto
Becker College	Drexel University	Kenyon College	New York University	Chicago	Union College (New York)	U of Vermont
Bentley University	Duquesne	Lafayette College	Nichols College	School of Visual Arts	United States Army	U of Wisconsin, Madison
Binghamton University	Eastern University	Lasell College	Northeastern	Siena College	United States Marine Corps	Villanova University
Boston College	Eckerd College	Lehigh University	Norwich University	Stony Brook	United States Navy	Virginia Tech
Boston University	Elon University	Lesley University	Ohio University	Suffolk University	U of Central Florida	Wellesley College
Brandeis University	Emerson College	Manhattan College	Paul Smith's College	SUNY Alfred State	U of Cincinnati	Wentworth Institute of Technology
Bridgewater State	Emmanuel College	Manhattanville	Pennsylvania State	Syracuse University	U of Connecticut	Wesleyan University
Brown University	Endicott College	Marist College	Plymouth State	Temple University	U of Delaware	Western New England University
Bryant University	Fairfield University	Maryland Institute Coll of Art	Point Park	Texas Christian University	U of Hartford	Westfield State
Bucknell University	Fitchburg State	Marymount Manhattan	Pratt Institute	The College of Saint Rose	U of Illinois at Urbana-Champaign	Westmont College
Butler University	Florida Institute of Technology	Mass College of Art and Design	Providence College	The George Washington	U of Maine	Wheaton College IL
Carnegie Mellon	Fordham University	Mass Institute of Technology	Purchase College SUNY	The Master's University	U of Maine at Farmington	Wheaton College MA
Castleton University	Framingham State	Mass Maritime	Purdue University	The New School	U of Maryland, College Park	WPI
Cedarville University	Franklin Pierce	Merrimack College	Quinnipiac	The Ohio State University	U of Mass Dartmouth	Worcester State
Central Connecticut State	Georgetown University	Messiah College	Regis College	U of Manchester	U of Mass, Amherst	
Champlain College	Georgia Institute of Technology		RPI	U of Massachusetts Lowell	U of Mass, Boston	
Christopher Newport	Gettysburg College		Rhode Island College	U of Michigan	U of Mass, Lowell	
Clark University	Green Mountain College		Rhode Island School Design	U of New Hampshire	U of Miami	
Clarkson University	Gordon College		Ringling Art & Design	U of New Haven	U of Pennsylvania	
Clemson University	Grinnell College		Rochester Institute of Technology	U of Pittsburgh	U of Texas, Austin	
Colby College	Hamilton College		Roger Williams		U of Virginia	
Colby-Sawyer	Hampshire College		Rollins College		U of Wisconsin	
Colgate University	High Point				U of Wyoming	
College of the Holy Cross						
College of William and Mary						

College Rep visits scheduled through www.repvisits.com

Nashoba Regional High School

Profile 2017-2018

12 Green Road, Bolton, Massachusetts 01740
Tel: (978) 779-0122 Fax (978) 779-5581 www.nrhs.nrsd.net
Email: first-initiallast-name@nrsd.net ex jdoe@nrsd.net

Administrative

Brooke Clenchy, *Superintendent*
Paul DiDomenico, *Principal*
Brian Cote, *Assistant Principal*
Steve Cullinane, *Assistant Principal*
Beth Pratt, *Assistant Principal*

CEE/ACT School Code: 220162

Guidance Staff

Jodi Specht, *Director*
Kate Abruzzese, *Counselor*
Sarah Dodd, *Counselor*
Dan Glover, *Counselor*
Jessica McDonald, *Counselor*
Trevor Short, *Counselor*
Erica Stone, *Counselor*
Jeanine Eickhorst, *Registrar*
Stephanie Hilliger, *Dept. Secretary*